

Copy Controller (RCK02.OCX Activex Control)

How Copy Controller is work

How **Copy-Controller** works, For e.g. you have developed a School Software and you have integrated The **Copy-Controller** in your software. and you also have the key generator software for your school software.

Activation Key Generator Software (Example-3)

We Provide Miscellaneous Serial No

Mac Address : ABPJTGEBOG

Motherboard No. : TNLNPTEQSM

HDD No. : SRJXJHRDUE

HDD Module : SAMSUNG SV0411I

Processor ID : CLEBSZGMCZ

Client MID Code and Activation Code detail

Software : ☒ School Software ☐ Accounting Software ☐ Payslip Software

Mid Code : XDPDXG-ZMOLM-IZPTM-RFHUY-VCJSE

Software ID : 1 School Software

Motherboard No. : TEQSM

HDD No. : HRDUE

Processor ID : ZGMCZ

Mac Address : GEBOG

Activation Code : RODVRYJ-AYHGQ-BFPUJ-PJEWX-KQKQU

www.theroyalsoftware.com

Explanation:-

- (1) Client gives you MID Code(Key)
- (2) Enter that MID Code in Key Generator Software
- (3) Press 'Unprotect MID Code' Button. It will return Motherboard No., HDD No., Processor ID, Mac Address and Software ID (e.g. 1 For school software, 2 For account software, 3 For Payslip) which you have passed in your school software
- (4) Press 'Generate Activation Code' Button. It will create Activation Code(Code contain 'Motherboard No.'+'HDD No.'+'Processor ID'+'Mac Address'+ 'Software ID' in Encrypted format)
- (5) Pass Activation Code to your client. He/She will Enter in software then press 'OK'. Activation Code will Decrypt. Hardware Sr.no.(which is from activation code) that will match with Hardware Sr.no. of client PC.If it matches then your School software works as a license copy

Your School Software (Example-3)

Mid Code : XDPDXG-ZMOLM-IZPTM-RFHUY-VCJSE

Activation : RODVRYJ-AYHGQ-BFPUJ-PJEWX-KQKQU

to see above example find out example project from your downloaded setup

For (VB6) See Example Project **RCK_ActivexControl_VB6_Example\RCK_Example3**

For (VB.NET) See Example Project **RCK_ActivexControl_VBNET2008_Example\RCK_Example3**

For (C#.NET) See Example Project **RCK_ActivexControl_C#2008_Example\RCK_Example3**

(find out exe from example folder and run)

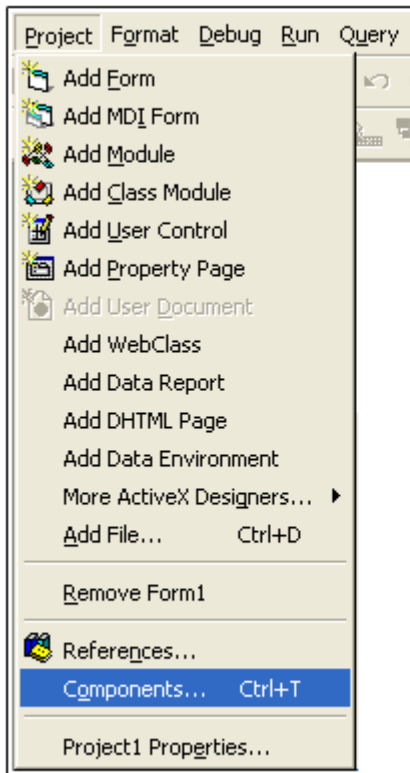
How to implement RCK.OCX file in your VB6/VB.NET application

1. First run RCKsetup\setup.exe
(If your operation system is **windows7/vista** then right click on Setup.exe and select Run as administrator and press Yes)

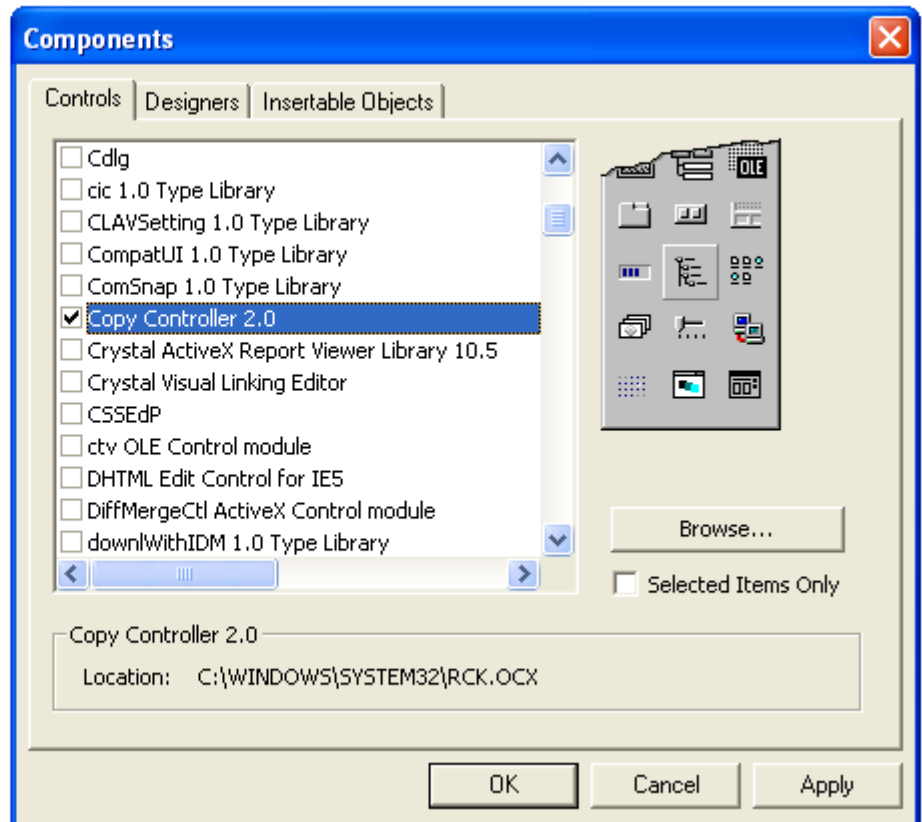
2. In your VB6 application

- (1) Select **Project->components** from menu.
- (2) Select **Copy Controller 2.0** from Controls tab and press OK
- (3) Drag **RCK** from ToolBox to your form (it will create **RCK1** object in form)

(1)



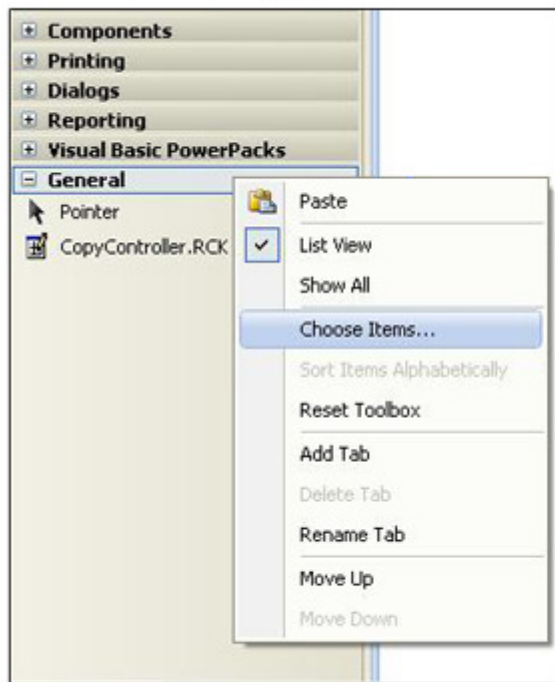
(2)



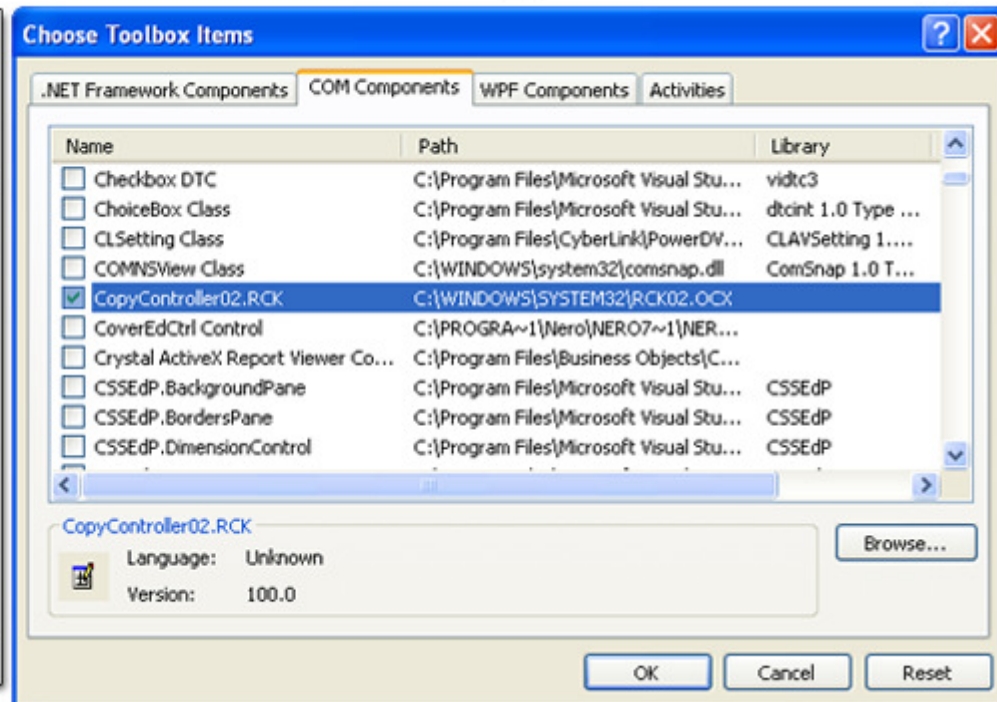
In your VB.NET application

- (1) Right click on general tab of toolbox and select **Choose Items...** from menu
- (2) Select **CopyController.RCK** from COM Components tab and press OK
- (3) Drag **CopyController.RCK** from ToolBox to your form (it will create **AxRCK1** object in form, Rename object **AxRCK1** to **RCK1**)

(1)



(2)



3. For using any property of **RCK1** control first you have to set three properties of **RCK1** in **Form_Load** function as below

```
Private Sub Form_Load()
    'RCK1.P_ProgramID (e.g. "4AD14721F3698705BA618E2C" )
```

```

' * Activation Key encryption logic will depend on this key
' * ProgramID Must have 24 Characters
' * All Characters of ProgramID Must be 0 To 9 OR 'A' To 'F'
'
'RCK1.P_Sequence (e.g. "ABCDEFGHJKLMNOPQRSTUVWXYZ" this is default value)
' * for advance protection use this property otherwise not require
' * Sequence String length Must be 26 characters
' * All characters must be between ('A' to 'Z') OR (0 to 9)
' * No character must repeat
' * Here output character Key(Activation Code Or MID Code) is map as "A as A,B as B,
' * C as C....as on Z as Z". you can change maping value as per your requirement
' * E.g.
'         RCK1.P_Sequence = "ABCDEFGHJKLMNOPQRSTUVWXYZ"
'         RCK1.P_Sequence = "ABCDEFGHJKLMNOPQ123456789"
'         RCK1.P_Sequence = "ZYXWVUTSRQPONMLKJIHGFEDCBA"
'
'RCK1.P_SoftwareID (e.g. 1 is Default value)
' * If you have more than 1 software use this property(if you changed P_ProgramID in
' * all your softwares then you don't set this property)
' * SoftwareID Must Be Between 1 To 26
' * E.g.
'         RCK1.P_SoftwareID = 1 (For School Software)
'         RCK1.P_SoftwareID = 2 (For Account Software)
'         RCK1.P_SoftwareID = 3 (For Payslip)
'##### NOTE #####
'IN DEMO VERSION
'YOU CAN NOT CHANGE VALUE OF FOLLOWING PROPERTY. VALUE OF FOLLOWING PROPERTY IS READONLY
'IN DEMO VERSION
'   RCK1.P_ProgramID = "0123456789ABCDEF01234567"
'   RCK1.P_Sequence = "ABCDEFGHJKLMNOPQRSTUVWXYZ"
'   RCK1.P_SoftwareID = 1
'#####
'
'   RCK1.P_ProgramID = "0123456789ABCDEF01234567"
'   RCK1.P_Sequence = "ABCDEFGHJKLMNOPQRSTUVWXYZ"
'   RCK1.P_SoftwareID = 1
End Sub

```

You have to set above 3 properties in your Key Generator software and your Application (e.g. your School software) and this 3 property must be same in both softwares (key generator software and your Application).

4. RCK control provide **three ways** for copy protection.

(1) Use Following function.

- Use following function in your application (e.g. School software)

```

RCK1.P_GetMID1      'Return MID Code(key) (which contains PC hardware Sr.no. in
                    'encrypted format)

```

```

RCK1.M_UnprotectAct1 'This function Unprotect(Decrypt) Activation Code(Key)

```

- Use following function in your Key generator software

```

RCK1.M_UnProtectMID1 'Unprotect(Decrypt) MID Code(Key) and return PC hardware Sr.no.

```

```

RCK1.M_GetAct1      'Generate Activation Code(Key) (which contains PC hardware Sr.no.)

```

For this find out following example project from your downloaded setup

For (VB6) See Example Project **RCK_ActivexControl_VB6_Example\RCK_Example1**

For (VB.NET) See Example Project **RCK_ActivexControl_VBNET2008_Example\RCK_Example1**

For (C#.NET) See Example Project **RCK_ActivexControl_C#2008_Example\RCK_Example1**

OR

(2) Use following function [you can pass 3 characters(as per your requirement) to MID Code(key) and Activation code(key)]

- Use following function in your application (e.g. School software)

```

RCK1.P_GetMID2      'Return MID Code(key) which contains PC hardware Sr. no. in
                    'encrypted format)

```

```

RCK1.M_UnprotectAct2 'This function Unprotect(Decrypt) Activation code(Key)

```

- Use following function in your Key generator software

```

RCK1.M_UnProtectMID2 'Unprotect(Decrypt) MID Code(Key) and return PC hardware Sr.no.

```

```

RCK1.M_GetAct2      'Generate Activation code(Key) (which contains PC hardware Sr.no.)

```

For this find out following example project from your downloaded setup

For (VB6) See Example Project **RCK_ActivexControl_VB6_Example\RCK_Example2**

For (VB.NET) See Example Project **RCK_ActivexControl_VBNET2008_Example\RCK_Example2**
For (C#.NET) See Example Project **RCK_ActivexControl_C#2008_Example\RCK_Example2**

OR

(3) Use following function [you can pass 20 characters of hardware Sr.no. (as per your requirement) to MID Code(key) and Activation code(key)]

- Use following function in your application (e.g. School software)

```
RCK1.P_GetMID3      'Return MID Code(key) which contains customized PC hardware Sr.no.  
                    'in encrypted format)
```

```
RCK1.M_UnprotectAct3 'This function Unprotect(Decrypt) Activation code(Key)
```

- Use following function in your Key generator software

```
RCK1.M_UnProtectMID3 'Unprotect(Decrypt) MID Code(Key) and return PC hardware Sr.no.
```

```
RCK1.M_GetAct3      'Generate Activation code(Key) (which contains PC hardware Sr.no.)
```

For this find out following example project from your downloaded setup

For (VB6) See Example Project **RCK_ActivexControl_VB6_Example\RCK_Example3**

For (VB.NET) See Example Project **RCK_ActivexControl_VBNET2008_Example\RCK_Example3**

For (C#.NET) See Example Project **RCK_ActivexControl_C#2008_Example\RCK_Example3**

5. Let us start how to use **first way** to use this function in detail

- Use following function in your application (e.g. School software)

-> RCK1.P_GetMID1

First this function finds out UNIQUE ID means it finds **Motherboard Sr.no., HardDisk Sr.no., Processor Sr.no., MAC Address** in this sequence which one of them is first found that We call as UNIQUE ID. and function protect(encrypt) UNIQUE ID+SoftwareID which is called **MID Code**

this function return **MID Code**

width of **MID Code** is 17 character and every character of **MID Code** is 'A' to 'Z'

(as per RCK1.P_Sequence)

e.g.

SVHOR-SDUS-VQVB-FNTM

MWSTW-TYDJ-GBIU-COSJ

-> RCK1.M_UnprotectAct1

This function unprotect(decrypt) **Activation Code**. It has 5 parameters.

E.g.

```
Dim AppStatus As Integer
```

```
AppStatus = RCK1.M_UnprotectAct1(ActivationCode, UniqueID, SoftwareID, _  
                                App.Path, IsCreateRCKLIC1_DLL)
```

```
' Parameters description  
' ActivationCode    -> Pass Activation Code  
' UniqueID          -> Return UNIQUE ID  
' SoftwareID        -> Return Software ID  
' App.Path          -> Pass exe path (e.g. 'D:\School01') where it saves  
'                   Activation Code in RCKLIC1.DLL file  
' IsCreateRCKLIC1_DLL -> Pass True, if activation code successfully unprotect  
'                   then Activation code will save to (App.Path &  
'                   "RCKLIC1.DLL")  
'  
' function return 0,-1 to -5  
' -1 For    Entering 16 characters of Activation Code  
' -2 For    Every Character of Activation Code must be between 'A' to 'Z'  
'           (e.g. if RCK1.SequenceNo = 'ABCDEFGHJKLMNOP0123456789' then 'A'  
'           to 'P' OR 0 TO 9)  
' -3 For    Invalid Activation code(Typing mistake) or this activation code  
'           is not for this application  
' -4 For    UniqueID(Motherboard Sr.No.,HDD Sr.No.,... as on) of Activation  
'           Code doesn't match with UniqueID of MID code  
' -5 For    SoftwareID(1 to 26) of Activation Code doesn't match with SoftwareID  
'           of MID Code  
' 0 ForActivation Code unprotect Successfully  
'  
' AppStatus    -> 0                Activation Success (Registered Copy)  
' AppStatus    -> -1 to -5        Error (Application status is Demo)
```

- Use following function in your Key generator software

-> RCK1.M_UnProtectMID1

This function unprotect(decrypt) **MID Code**. in this function there are 4 parameters.

E.g.

```
Dim ErrorNo As Integer
```

```
ErrorNo = RCK1.M_UnProtectMID1(TxtMID.Text, UniqueID, UniqueType, SoftwareID)
```

'Parameters description

'TxtMID.Text -> Pass MID code (which you have received from your client)

'UniqueID -> Return Unique ID

'UniqueType -> Return Unique ID type.1 For **Motherboard Sr.No.**, 2 For **HardDisk Sr.no.**,
' 3 For **Processor Sr.no.**, 4 For **MAC Address**.

'SoftwareID -> Return software ID

' Function return 0,-1,-2,-3

' -1 For width of MID Code must be 17 characters

' -2 For Every Character of MID Code must be between 'A' to 'Z'

' (if RCK1.SequenceNo = 'ABCDEFGHJKLMNOP0123456789' then 'A' to 'P'
' OR 0 TO 9)

' -3 For Invalid MID code(Typing mistake) or this **MID code** is not for
' this application

' 0 For MID Code unprotect Successfully

-> RCK1.M_GetAct1

This function Generates **Activation Code**(which contains UNIQUE ID+SoftwareID in incrypted format)
width of **Activation Code** is 16 characters

Every character of **Activation Code** is 'A' to 'Z'

OR if RCK1.SequenceNo = 'ABCDEFGHJKLMNOP0123456789' then 'A' to 'P' OR 0 TO 9

e.g.

```
Dim ActivationCode As String
```

```
ActivationCode = RCK1.M_GetAct1(TxtMID.Text)
```

'Parameter description

'TxtMID.Text -> Pass MID Code (which you have received from your client)

,

'Function Return Activation Code or return following error no

' "-1" for width of MID Code(parameter) must be 17 characters

' "-2" for Every character of MID Code must be "A" TO "Z"

' "-3" for Invalid MID Code(Typing mistake) or this MID Code is not for
' this application

'e.g. 'INXY-DUPY-EFER-QYZG'

6. Let us start how to use **Second way** to use this function in detail

- Use following function in your application (e.g. School software)

-> RCK1.P_GetMID2

First this function finds out UNIQUE ID means it finds **Motherboard Sr.No.**, **HardDisk Sr.no.**,
Processor Sr.no., **MAC Address** in this sequence which one of them is first found that is called UNIQUE ID.
and function protect(encrypt) UNIQUE ID+SoftwareID+(3 extra characters) which is called **MID Code**
this function return **MID Code**

* width of **MID Code** is 20 characters and every character of **MID Code** is A to Z (as per RCK1.P_Sequence)

e.g.

```
Dim ErrorNo As Integer
```

```
Dim MIDCode As String
```

```
Dim ExtraChar As String
```

```
ExtraChar = "ABC"
```

```
ErrorNo = RCK1.P_GetMID2(MIDCode,ExtraChar)
```

'Parameters description

'MIDCode-> Return MID Code (e.g. Return VHODR-SDGUS-VQAVB-FNDTM)

'ExtraChar -> Pass 3 characters as per your requirement

,

' This function return 0,-1 or -2

' -1 For Width of ExtraChar(paramater) must be 3 characters

```
' -2 For ExtraChar(parameter) value must be 'A' to 'Z'
' 0 For MID Code Successfully created
```

-> RCK1.M_UnprotectAct2

This function unprotect(decrypt) **Activation Code**. it has 6 parameters.

E.g.

Dim AppStatus As Integer

```
AppStatus = RCK1.M_UnprotectAct2(ActivationCode, UniqueID, SoftwareID, _
                                ExtraChar, App.Path, IsCreateRCKLIC2_DLL)
```

```
' Parameters description
' ActivationCode      -> Pass Activation Code
'                      (e.g. Return HODR-SDGUS-VQAVB-FNDTM )
' UniqueID           -> Return UNIQUE ID
' SoftwareID         -> Return Software ID
' ExtraChar          -> Return Extra 3 characters Which you have passed
'                      when activation code generated
' App.Path           -> Pass exe path (e.g. 'D:\School01') where it saves
'                      Activation Code in RCKLIC2.DLL file
' IsCreateRCKLIC2_DLL -> Pass True, if Activation Code successfully unprotect
'                      and then Activation code will save to (App.Path
'                      & "RCKLIC2.DLL")
'
' function return 0,-1 to -5
' -1 For width of Activation Code must be 19 characters
' -2 For Every Character of Activation Code must be between 'A' to 'Z'
'      (e.g. if RCK1.SequenceNo = 'ABCDEFGHJKLMNOP0123456789' then
'      'A' to 'P' OR 0 TO 9 )
' -3 For Invalid Activation Code(Typing mistake) or this Activation Code
'      is not for this application
' -4 For UniqueID of Activation code doesn't match with UniqueID of MID code
' -5 For SoftwareID(1 to 26) of Activation Code doesn't not match with
'      SoftwareID of MID code
' 0 For Activation Code unprotect Successfully
' AppStatus -> 0 Activation Success (Registered Copy)
' AppStatus -> -1 to -5 Error (Application status is Demo)
```

- Use following function in your Key generator software

-> RCK1.M_UnProtectMID2

This function unprotect(decrypt) **MID Code**. in this function there are 5 parameters.

E.g.

Dim ErrorNo As Integer

```
ErrorNo = RCK1.M_UnProtectMID2(TxtMID.Text, UniqueID, UniqueType, SoftwareID, _
                                ExtraChar)
```

```
'Parameters description
'TxtMID.Text -> Pass MID Code (which you have received from your client)
'UniqueID    -> Return Unique ID
'UniqueType  -> Return Unique ID type. 1 For Motherboard Sr.No., 2 For HardDisk
'              Sr.no., 3 For Processor Sr.no., 4 For MAC Address.
' SoftwareID -> Return software ID
' ExtraChar  -> Return Extra 3 characters Which you have passed when MID Code
'              generated
' function return 0,-1,-2,-3
' -1 For width of MID Code must be 20 characters
' -2 For Every Character of MID Code must be between 'A' to 'Z'
'      (e.g. if RCK1.SequenceNo = 'ABCDEFGHJKLMNOP0123456789' then
'      'A' to 'P' OR 0 TO 9 )
' -3 For Invalid MID code(Typing mistake) or this MID code is not for this
'      application
' 0 For MID Code unprotect successfully
```

-> RCK1.M_GetAct2

This function Generates **Activation Code**(which contains UNIQUE ID+SoftwareID in incrypted format)

width of **Activation Code** is 19 characters

Every Character of **Activation Code** is 'A' to 'Z'

OR if e.g. RCK1.SequenceNo = 'ABCDEFGHJKLMNOP0123456789' then 'A' to 'P' OR 0 TO 9

e.g.

```
Dim ActivationCode As String
Dim ExtraChar As String
ExtraChar = "ABC"

ActivationCode = RCK1.M_GetAct2(TxtMID.Text, ExtraChar)

'Parameters description
'TxtMID.Text -> Pass MID Code (which you have received from your client)
'ExtraChar -> Pass Extra characters (as per your requirement)
,
'function Return Activation Code or return following error no
' "-1" for width of MID Code must be 20 characters
' "-2" for Every character of MID Code must be "A" TO "Z"
' "-3" for Invalid MID code(Typing mistake) or this MID Code is not for
' this application
' "-4" for Width of ExtraChar(paramater) must be 3 characters
' "-5" for Every character of ExtraChar(paramater) must be between
' 'A' to 'Z'
'e.g. Return 'INXY-XDUPY-VEFER-KQYZG'
```

7. Let us start how to use **Third way** to use this function in detail

- Use following function in your application (e.g. School software)

-> RCK1.P_GetMID3

You can pass PC hardware Sr.no. as per your requirement. e.g. here we pass 5 characters of **Motherboard Sr.no.**, 5 characters of **HardDisk Sr.no.**, 5 characters of **Processor Sr.no.** and 5 characters of **MAC Address**.

this function protect(encrypt) 20 characters of hardware Sr.no+SoftwareID which is called **MID Code**
this function return **MID Code**

* width of **MID Code** is 26 characters and every character of **MID Code** is A to Z (as per RCK1.P_Sequence)

e.g.

```
Dim ErrorNo As Integer
Dim MIDCode As String
Dim ExtraChar As String

ExtraChar = Right(RCK1.M_GetMotherBoardSerialNo(), 5)
ExtraChar = ExtraChar + Right(RCK1.M_GetHDDSerialNo(0, ""), 5)
ExtraChar = ExtraChar + Right(RCK1.M_GetProcessorId(), 5)
ExtraChar = ExtraChar + Right(RCK1.M_GetMacAddress(), 5)
ExtraChar = Left(ExtraChar, 20) ' pass only 20 character

ErrorNo = RCK1.P_GetMID3(MIDCode, ExtraChar)

'Parameters description
'MIDCode-> Return MID Code (e.g. Return KLJEUQ-VHODR-SDGUS-VQAVB-FNDTM )
'ExtraChar -> Pass 20 characters of hardware Sr.no. as per your requirement
,
' This function return 0, -1 or -2
' -1 For Width of ExtraChar(paramater) must be 20 characters
' -2 For ExtraChar(parameter) value must be 'A' to 'Z'
' 0 For MID Code Successfully created
```

-> RCK1.M_UnprotectAct3

This function unprotect(decrypt) **Activation Code**. it has 5 parameters.

E.g.

```
Dim AppStatus As Integer
AppStatus = RCK1.M_UnprotectAct3(ActivationCode, SoftwareID , ExtraChar, _
App.Path, IsCreateRCKLIC3_DLL)

' Parameters description
```

```

' ActivationCode    -> Pass Activation Code
'                  (e.g.HKQTUVP-AHODR-SDGUS-VQAVB-FNDTM)
' SoftwareID       -> Return Software ID
' ExtraChar        -> Return Extra 20 characters Which you have passed when
'                  activation code is generated(which contains hardware
'                  Sr.no of client PC as per your requirement)
' App.Path         -> Pass exe path (e.g. 'D:\School01') where it saves
'                  Activation Code in RCKLIC3.DLL file
' IsCreateRCKLIC3_DLL -> Pass True, if activation code successfully unprotect
'                  and then Activation code will save to (App.Path &
'                  "RCKLIC3.DLL")
'
'Here we check hardware Sr.no.of Activation Code With hardware Sr.no. of
'Client PC
If GetHardwareInfo() <> ExtraChar Then
    AppStatus = -5
End If

' function return 0,-1 to -4
' -1 For Width of Activation Code must be 27 characters
' -2 For Every Character of Activation Code must be between 'A' to 'Z'
'      (e.g. if RCK1.SequenceNo = 'ABCDEFGHJKLMNOP0123456789' then
'      'A' to 'P' OR 0 TO 9 )
' -3 For Invalid Activation Code(Typing mistake) or this Activation Code is
'      not for this application
' -4 For SoftwareID(1 to 26) of Activation Code doesn't not match with
'      SoftwareID of MID code
' -5 For Hardware Sr.no.of Activation code doesn't match with Hardware
'      Sr.no.of Client PC
' 0 ForActivation Code unprotect Successfully
' AppStatus -> 0 Activation Success (Registered Copy)
' AppStatus -> -1 to -5 Error (Application status is Demo)

Private Function GetHardwareInfo() As String
    ' this function return hardware information
    ' Return (5 characters of Motherboard Sr.no.)+(5 characters of HDD Sr.no.)
    ' +(5 characters of Processor Sr.no.)+(5 characters of Mac Address)
    ' Total 20 characters return

    Dim ExtraChar As String
    ExtraChar = Right(RCK1.M_GetMotherBoardSerialNo(), 5)
    ExtraChar = ExtraChar + Right(RCK1.M_GetHDDSerialNo(0, ""), 5)
    ExtraChar = ExtraChar + Right(RCK1.M_GetProcessorId(), 5)
    ExtraChar = ExtraChar + Right(RCK1.M_GetMacAddress(), 5)
    ExtraChar = Left(ExtraChar, 20) ' pass only 20 character
    GetHardwareInfo = ExtraChar
End Function

```

- Use following function in your Key generator software

- > RCK1.M_UnProtectMID3

This function unprotect(decrypt) **MID Code**. in this function there are 3 parameters.

E.g.

```
Dim ErrorNo As Integer
```

```
ErrorNo = RCK1.M_UnProtectMID3(TxtMID.Text, SoftwareID, ExtraChar)
```

'Parameters description

'TxtMID.Text -> Pass MID Code (which you have received from your client)

'SoftwareID -> Return software ID

'ExtraChar -> Return Extra 20 characters Which you have passed when
' MID Code is generated (which contain hardware Sr.no.of
' client PC as per your requirement)

' Function return 0,-1,-2,-3

' -1 For width of **MID Code** must be 26 characters


```
' -2 For Every Character of MID Code must be between 'A' to 'Z'
' (e.g. if RCK1.SequenceNo = 'ABCDEFGHJKLMNOP0123456789' then
' 'A' to 'P' OR 0 TO 9 )
' -3 For Invalid MID code(Typing mistake) or this MID code is not for this
' application
' 0 For MID Code unprotect Successfully
```

-> RCK1.M_GetAct3

This function Generates **Activation Code**(which contains client PC hardware Sr.no.+SoftwareID in incrypted format).

width of **Activation Code** is 27 characters

Every Character of **Activation Code** is 'A' to 'Z'

OR if e.g. RCK1.SequenceNo = 'ABCDEFGHJKLMNOP0123456789' then 'A' to 'P' OR 0 TO 9

e.g.

```
Dim ActivationCode As String
```

```
Dim ExtraChar As String
```

```
ExtraChar = HardwareSerialOfClientPC
```

```
'when you unprotect MID Code, it will return hardware Sr.no. of client PC
```

```
'by ExtraChar(parameter).Pass this hardware Sr.no. to ExtraChar(parameter)
```

```
ActivationCode = RCK1.M_GetAct3(TxtMID.Text,ExtraChar)
```

```
'Parameters description
```

```
'TxtMID.Text -> Pass MID Code (which you have received from your client)
```

```
'ExtraChar -> Pass 20 Extra characters (which contain hardware Sr.no.of
' client PC as per your requirement)
```

```
'function Return Activation Code or return following error no.
```

```
' "-1" For width of MID Code(parameter) must be 26 characters
```

```
' "-2" For Every character of MID Code must be "A" TO "Z"
```

```
' "-3" For Invalid MID code(Typing mistake) or this MID code is not for
' this application
```

```
' "-4" For Width of ExtraChar(paramater) must be 20 characters
```

```
' "-5" For Every character of ExtraChar(paramater) must be between
```

```
' 'A' to 'Z'
```

```
'e.g. Return 'KOWCJWQ-FINXY-XDUPY-VEFER-KQYZG'
```

**For your customize requirements in this software
Contact Us**

Mob : +91 9824060814

Phone : +91 (2825)222700

Web : www.theroyalsoftware.com

info@theroyalsoftware.com

OR

royalsoftwares@yahoo.com

(For Business and Other inquiries)

support@theroyalsoftware.com

(For Technical support or Help about the software)
